

**NEW
PRODUCT**

AIR VALVES

To regulate air
into pipeline



 **ERREDI**

Solutions for your needs flow through ERRE.DI.

AIR VALVES



To regulate air into pipeline

In aqueduct systems, the use of automatic vents is linked, as is well known, to different needs:

- draw out the air when the main pipe is filling;
- let air into the pipe, breaking the vacuum forming while the pipe is emptying
- release the air trapped into the water during operation
- avoid damaging surges and water hammer (valves with antislam device).

The air release valve, depending on which and how many of the requirements described above solve, can consequently be of different types.



Production range

Sizes:
DN25 - DN600 / DN1" - DN24"

Pressure Rating:
PN2,5 - PN100 / ANSI150 - ANSI600

Material body:
cast Iron (grey and spheroidal), casted steel (stainless steel, Duplex, Superduplex), welded steel (stainless steel, Duplex, Superduplex) and bronze alloys.

Material internal parts:
The material predominantly used for the internal components are Stainless Steel (Duplex, Superduplex, AISI316/304), Special Alloys (Monel K500/400).

Internal / external coating:
If requested, special treatments are also carried out on the materials just mentioned, in order to increase their structural and/ or surface resistance.

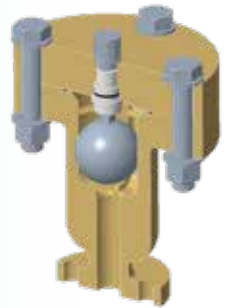
For the materials, such as for flanging and testing, the most important international standards can be followed, depending on the customer's request: UNI, ISO, BS, AWWA, ASTM, DIN.

Quality System: ISO 9001 Certified.

The type of air valves used to solve the different air problem involved with pipeline are:

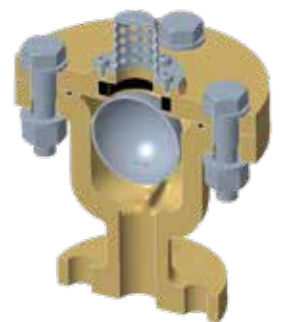
Air release valves

Designed to automatically release small pockets of accumulated air from a pipeline while the system operates under pressure exceeding atmospheric pressure.



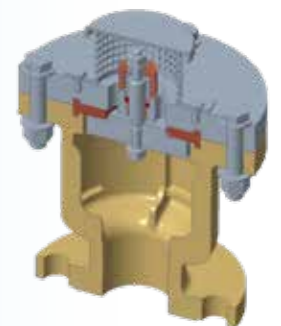
Air release/vacuum valves

Designed to exhaust large quantities of air automatically during pipeline filling and to admit large quantities of air automatically when the internal pressure in the pipeline drops below atmospheric pressure.



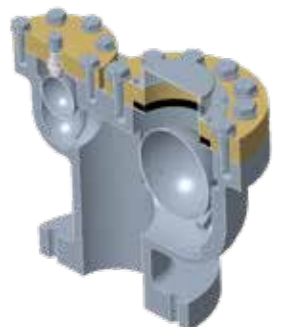
Vacuum Breaker Valve

Selected to prevent the vacuum pressure from forming, this valve is designed to automatically open and immediately admit large quantities of air if the internal pressure drops just below the atmospheric pressure. When the system pressure returns to positive values, the valve will instantly close.



Combination air valves

Designed to perform the same function as air/vacuum valves but, in addition, they will automatically release small pockets of air from the pipeline while under pressure, like an air release valve.



Warranty for the industry

ERRE.DI. provides internationally recognized certification (ISO 9001) for the Air valves.

Registered in the vendor list of the major companies, ERRE.DI. has taken part in different projects and has references all around the world.



www.erredi.it



ERRE.DI. srl

Via dei Lavoratori, 15-17 - 20092 Cinisello Balsamo (Milano)

Uffici: Tel. +39 02.660 40 229/660 47 168

Fax: +39 02.612 80 41- E-mail: erredi@erredisrl.it