

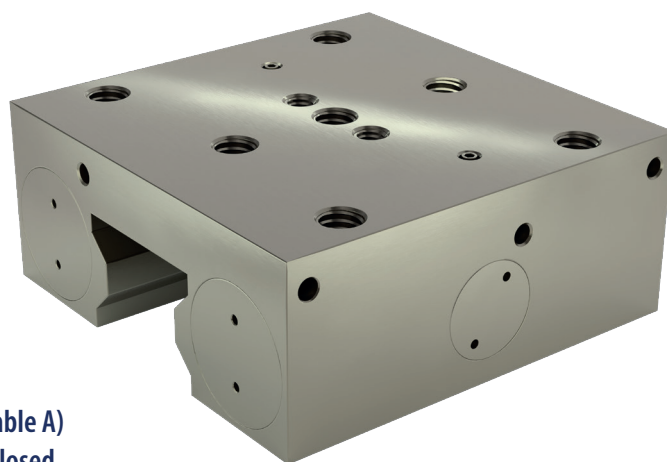
FRCDPM Clamping and Braking Element

Braking element with high clamping force.

Material and shape of contact parts allow high clamping force without damaging the rail.

FRCDPM##S SEM

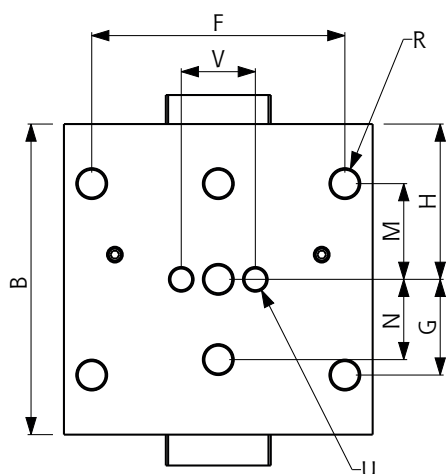
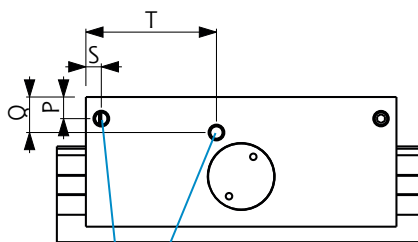
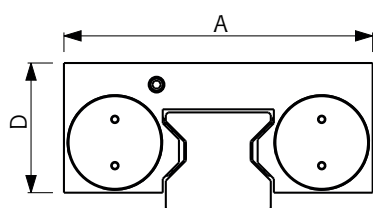
FRCDPM##S DEM



## Guide size	25 ÷ 35
\$ Guide type	S (see table A)
Working type	Norm. Closed
Body	Steel
Operating Temp.	-20°C ÷ 80°C
Operating Pressure	5,5 ÷ 8 bar

- ◆ Locking element without the use of energy
- ◆ High clamping force thanks to a double piston system
- ◆ Short reaction times
- ◆ Compact and rigid body
- ◆ Clamping in case of pressure drop
- ◆ Working in emergency stop

Type	Guide	Clamping Force [N]		A [mm]	B [mm]	D [mm]	F [mm]	G [mm]
		SEM	DEM					
FRCDPM	S 25	1500	3900	70	99	32.5	57	22.5
FRCDPM	S 30	2100	5600	90	109	38	72	22
FRCDPM	S 35	2600	6600	100	100.6	42	82	31



**M5
AIR CONNECTION**
we recommend
the use of compressed
air hose \varnothing 6x4

H [mm]	M [mm]	N [mm]	P [mm]	Q [mm]	R	S [mm]	T [mm]	U	V [mm]
49.5	22.5	20	7.75	5.25	M8x7	5	56	M6x7	20
54.5	26	22	9	6	M10x8	5	47	M8x8	22
50.3	31	26	7.5	11.5	M10x10	5	42.3	M8x10	24